

**CERTIFIED LAND CORNER RECORDATION**

DESCRIPTION OF CORNER EVIDENCE FOUND, AND ORIGINAL RECORD (if known)

LOCATION T.14N., R.65W. S.31 ¼ S. 6 T.13N., R.65W. 6th P.M.	A 2" x 2" Pine hub, probably set by Wyoming Highway Department forces, found in general vicinity but not accepted as corner monument by me.  Corner position re-established by proportionate measurement from adjacent corners east and west on township line.  G.L.O. record - Unknown.
--	--

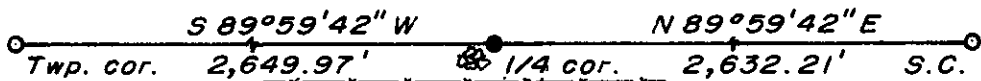
DESCRIPTION OF MONUMENT AND ACCESSORIES ESTABLISHED TO PERPETUATE THE ORIGINAL LOCATION OF THIS CORNER:

At the corner: Set a 5/8" dia. x 24" long rebar with 2" dia. aluminum cap.  
 Accessories: Raised small rock mound one foot southwest of corner monument.  
 WHD hub bears N 48°59'30" E, 8.53 feet distant.

SKETCH, WITH COURSE AND DISTANCE TO ADJACENT CORNER IF DETERMINED IN THIS SURVEY.

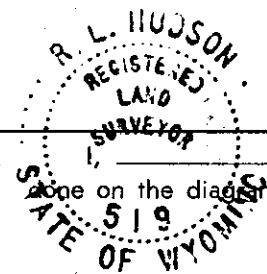
(May Sketch or Paste Reproduction on Reverse Side.)

Basis of Bearing: City of Cheyenne Datum.  
 Distances based on measurements by electronic means.  
 Coordinates: (City of Cheyenne Datum)  
 (x) = 627,647.29 feet; (y) = 69,388.03 feet



Aluminum cap stamped:

T.14N. R.65W.  
     S.31  
   ¼ S. 6  
 T.13N.  
 LS 519 1978



I, R. L. Hudson certify that I have carefully performed or reviewed the work done on the diagrammed corner as reported on this recordation form and approve the same.

R. L. Hudson Wyoming L.S. No. 519  
 Signature of Surveyor                      Registration No.

STATE OF WYOMING,  
 Office of Clerk and Recorder,  
 County of Sarawick

511167

This "corner record" was filed for record on the 21 day of December, 1978, was noted on the cross-index plat and is assigned page No. \_\_\_\_\_, in book No. \_\_\_\_\_.

James C. Withead  
 County Official

Cross Index No. <u>2-3</u>	T. <u>14</u>	R. <u>65</u>	Mer.
<u>A-3</u>	T. <u>13</u>	R. <u>65</u>	Mer.
_____	T. _____	R. _____	Mer.
_____	T. _____	R. _____	Mer.
_____	T. _____	R. _____	Mer.
_____	T. _____	R. _____	Mer.

51167

Photographed   
Indexed   
Posted   
Accession